

WAYNE COUNTY

REAL PROPERTY TAX SERVICE



16 WILLIAM STREET
LYONS, NEW YORK
www.co.wayne.ny.us
UNDER AUTHORITY
OF
WAYNE COUNTY BOARD OF SUPERVISORS

LEGEND

TOWN LINE	---	ROAD OR RAILROAD BNDY.	---
VILLAGE LINE	---	COUNTY LINE	---
SECTION MAP LIMIT	---	SEWER DISTRICT LINE	S---
GREAT LOT LINE	---	LIGHTING DISTRICT LINE	L---
SCHOOL DISTRICT LINE	SCH---	FIRE DISTRICT LINE	F---
WATER DISTRICT LINE	W---	DENOTES COMMON OWNER	⊕
GREAT LOT NO.	---	CALCULATED ACREAGE	7.5 A (C)
PROPERTY LINE	---	DEED ACREAGE	17.5 A
ORIGINAL LOT LINE	---	SCALED DIMENSION	452 (S)
RAILROAD	---	DEED DIMENSION	123.8 (D)
STREAM OR DITCH	---	SECTION & MAP NO.	60118-17
COORDINATE GRID	+	CENTERLINE DIMENSION	671.12 C

SPECIAL DISTRICTS

SCHOOL	NORTH-ROSE WOLCOTT CENTRAL SCHOOL DISTRICT
FIRE	WOLCOTT FIRE DISTRICT
WATER	VILLAGE OF WOLCOTT WATER DISTRICT
SEWER	VILLAGE OF WOLCOTT SEWER DISTRICT
LIGHTING	VILLAGE OF WOLCOTT LIGHTING DISTRICT

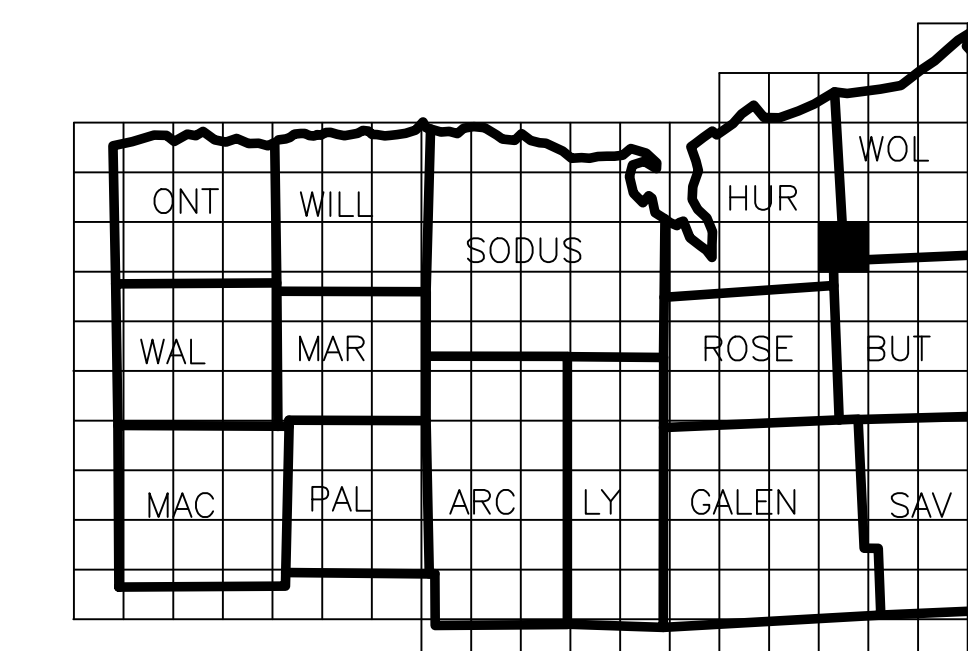
FOR TAX PURPOSES ONLY NOT TO BE USED FOR CONVEYANCE

All tax maps are referenced to the New York State Plane Coordinate System using the 1983 North American Datum (NAD 83). Property lines have been registered to the 1989 Wayne County Photogrammetric Base Map, and, as a result, dimensions and acreage may vary from legal descriptions. For complete legal descriptions or conveyances, please refer to the appropriate deeds and surveys.

NOTICE OF DISCLAIMER

This map represents a compilation of graphical and textual information from deeds and surveys, photogrammetric base maps, and digital conversion of hand-drawn maps. Errors and omissions may occur from each of these sources; each source represents a large number of records and orders of information. As a practical matter, the County does not warrant the accuracy or completeness of the information portrayed. The use of these maps is at the user's risk. The user agrees to accept the data "as is" with the full knowledge that errors and omissions may exist, and to hold harmless the County for any damages that may result from an inappropriate use of these maps.

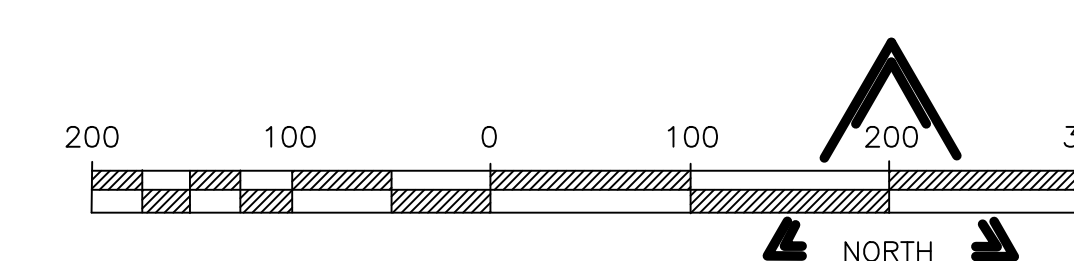
LOCATION MAP



SECTION BREAKDOWN

01	02	05	06	07	08
09	10	11	12	13	14
15	16	17	18	19	20

62113-00
1"=400' 1"=200' 1"=100'



REAL PROPERTY MAP WAYNE COUNTY, NEW YORK

THESE MAPS ARE COMPILED FOR TAX PURPOSES ONLY

MAP DATE	SECTION NO.	MAP NO.
	75117	20



75117-20

75116-08
VILLAGE OF WOLCOTT
TOWN OF BUTLER

SEE SECTION MAP 75116-07
SEE PARCEL MAP 75117-19

SEE PARCEL MAP 76117-17
SEE SECTION MAP 76117-13

SEE PARCEL MAP 75117-20
SEE SECTION MAP 75117-16

SEE PARCEL MAP 75117-17
SEE SECTION MAP 75117-20