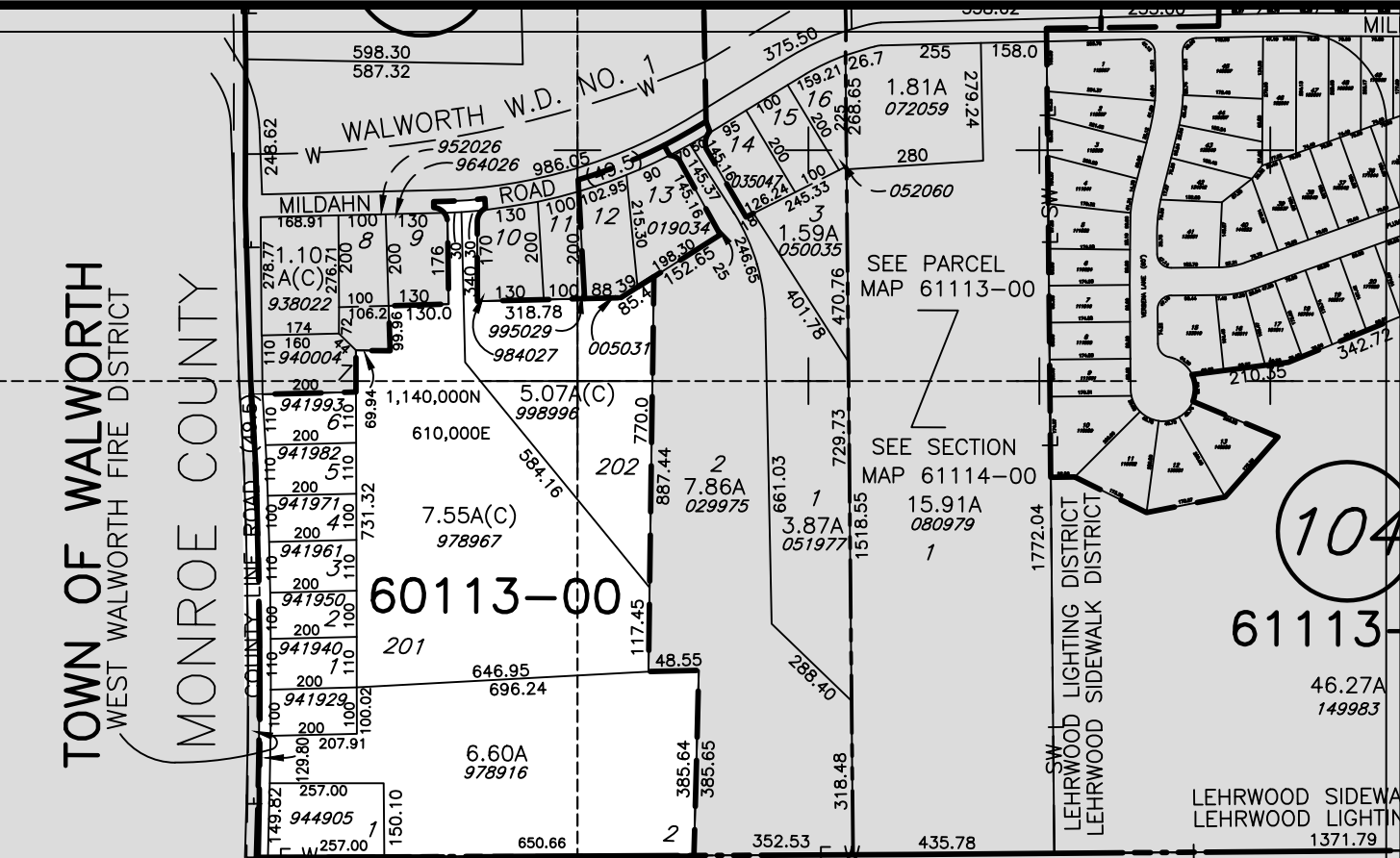


# WAYNE COUNTY REAL PROPERTY TAX SERVICE



16 WILLIAM STREET  
LYONS, NEW YORK  
www.co.wayne.ny.us  
UNDER AUTHORITY  
OF  
WAYNE COUNTY BOARD OF SUPERVISORS



### LEGEND

|                      |                               |
|----------------------|-------------------------------|
| TOWN LINE            | ROAD OR RAILROAD BNDY.        |
| VILLAGE LINE         | COUNTY LINE                   |
| SECTION MAP LIMIT    | SEWER DISTRICT LINE           |
| GREAT LOT LINE       | LIGHTING DISTRICT LINE        |
| SCHOOL DISTRICT LINE | FIRE DISTRICT LINE            |
| WATER DISTRICT LINE  | DENOTES COMMON OWNER          |
| GREAT LOT NO.        | CALCULATED ACREAGE 7.5 A (C)  |
| PROPERTY LINE        | DEED ACREAGE 17.5 A           |
| ORIGINAL LOT LINE    | SCALED DIMENSION 452 (S)      |
| RAILROAD             | DEED DIMENSION 123.8 (D)      |
| STREAM OR DITCH      | SECTION & MAP NO. 60118-17    |
| COORDINATE GRID      | CENTERLINE DIMENSION 671.12 Q |

### SPECIAL DISTRICTS

|          |                                  |
|----------|----------------------------------|
| SCHOOL   | PENFIELD CENTRAL SCHOOL DISTRICT |
| FIRE     | WEST WALWORTH FIRE DISTRICT      |
| WATER    |                                  |
| SEWER    |                                  |
| LIGHTING |                                  |
| PARK     |                                  |
| SIDEWALK |                                  |

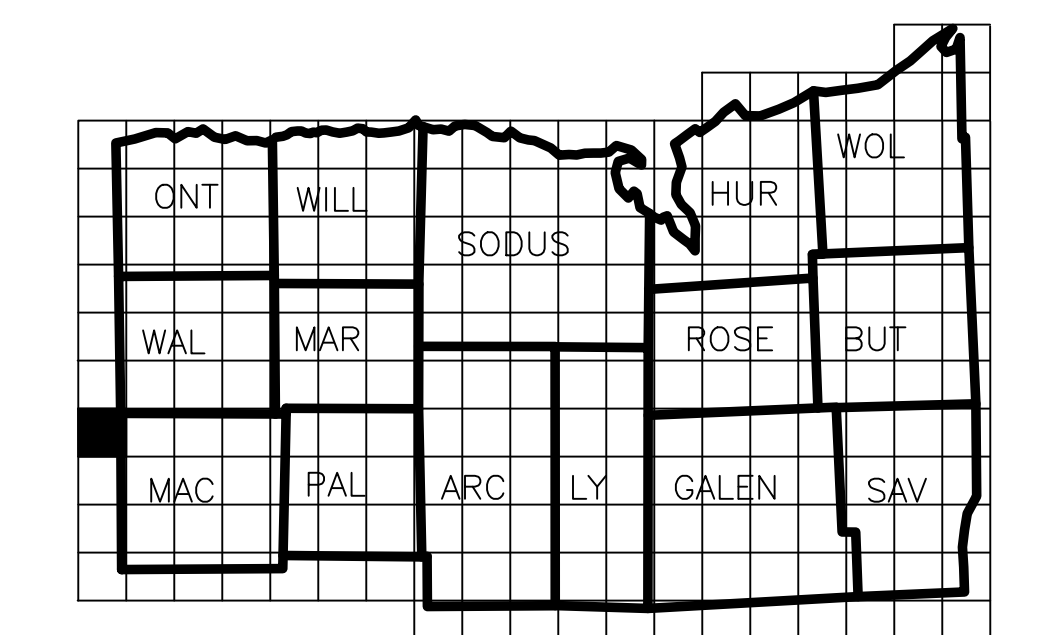
### FOR TAX PURPOSES ONLY NOT TO BE USED FOR CONVEYANCE

All tax maps are referenced to the New York State Plane Coordinate System using the 1983 North American Datum (NAD 83). Property lines have been registered to the 1989 Wayne County Photogrammetric Base Map, and, as a result, dimensions and bearings may vary from legal descriptions. For complete legal descriptions or conveyances, please refer to the appropriate deeds and surveys.

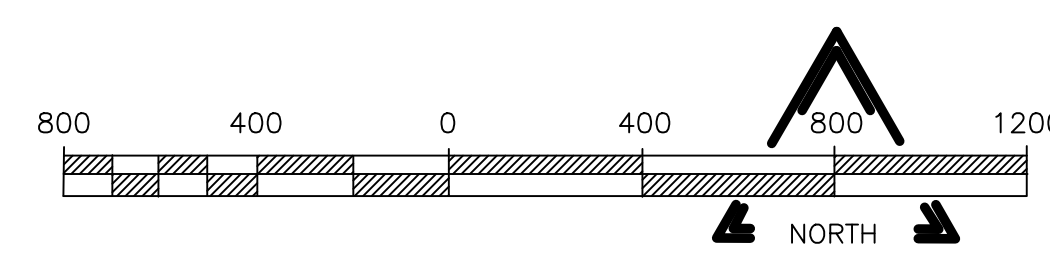
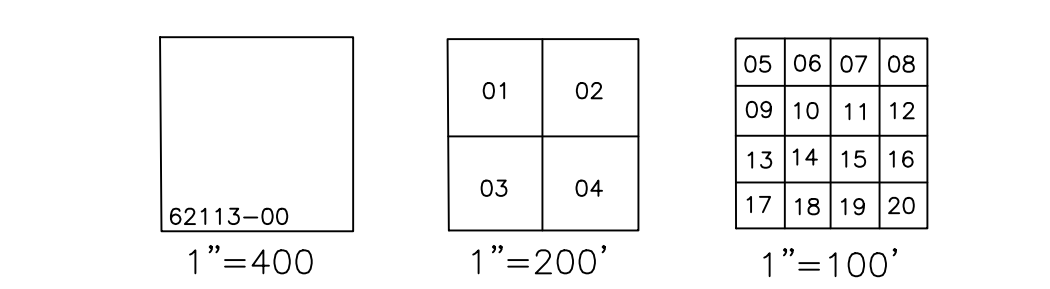
### NOTICE OF DISCLAIMER

This map represents a compilation of graphical and textual information from deeds and surveys, photogrammetric base maps, and digital conversion of hand drawn maps. Errors and omissions can occur from each of these sources; each source represents a large number of records and storage of information. As a practical matter, the County does not warrant the accuracy or completeness of the information portrayed. The user of these maps agrees to accept the data as is with the full knowledge that errors and omissions may occur and to hold harmless the County for any damages that may result from an inappropriate use of these maps.

### LOCATION MAP



### SECTION BREAKDOWN



### REAL PROPERTY MAP WAYNE COUNTY, NEW YORK

THESE MAPS ARE COMPILED FOR TAX PURPOSES ONLY

|          |             |         |
|----------|-------------|---------|
| MAP DATE | SECTION NO. | MAP NO. |
|          | 60113       | 00      |