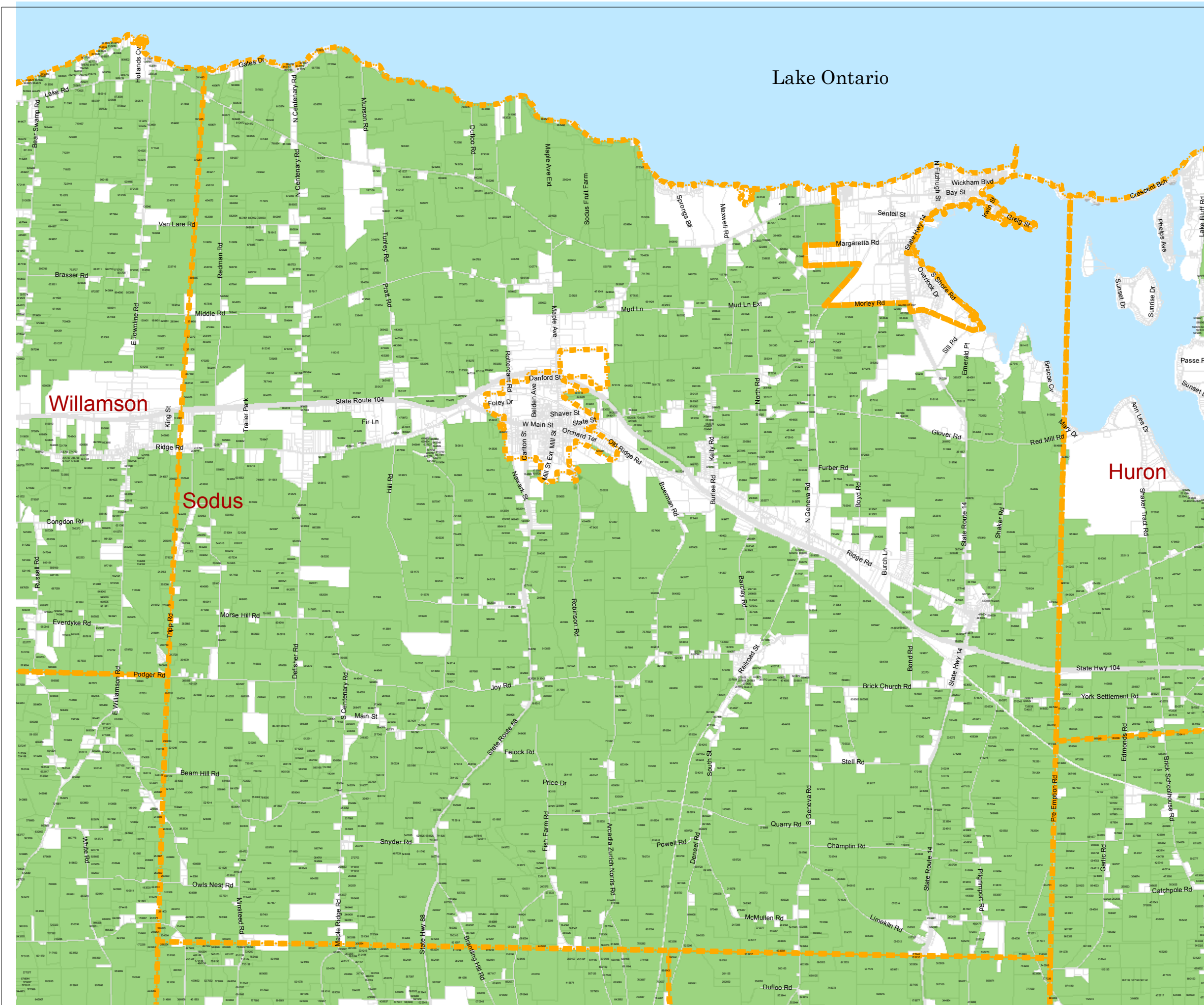




**ECONOMIC DEVELOPMENT  
& PLANNING DEPARTMENT**  
 9 PEARL STREET  
 LYONS, NY 14489  
 Telephone: (315) 946-5919  
 Facsimile: (315) 946-7657  
<http://web.co.wayne.ny.us>



**Agricultural District No. 1**

- Ag District No. 01
- 2017 RPTS parcels

in all the Towns of Wayne County:  
 Arcadia, Butler, Galen, Huron, Lyons,  
 Macedon, Marion, Ontario, Palmyra, Rose,  
 Savannah, Sodus, Walworth, Williamson and Wolcott  
 4/19/2016. 303b additions 3/21/17; 3/20/18  
 Amended Acreage= 293,816

**Town of Sodus**

Agricultural District No. 1  
 Modified and continued by Board of Supervisors  
 Resolution 253-16; April 19, 2016  
 Next Review Deadline July 8, 2024  
 303b Resolutions 176-17;160-18



**SOURCES:**

BASE MAP:  
 ALIS road information- NYS Office of Cyber Security (OCS)  
 Regional Municipality Boundaries NYSOCS  
 Parcel Boundaries: Polygons provided by  
 Wayne County Real Property Tax  
 Department March 31, 2017

**Countywide Agricultural District**

