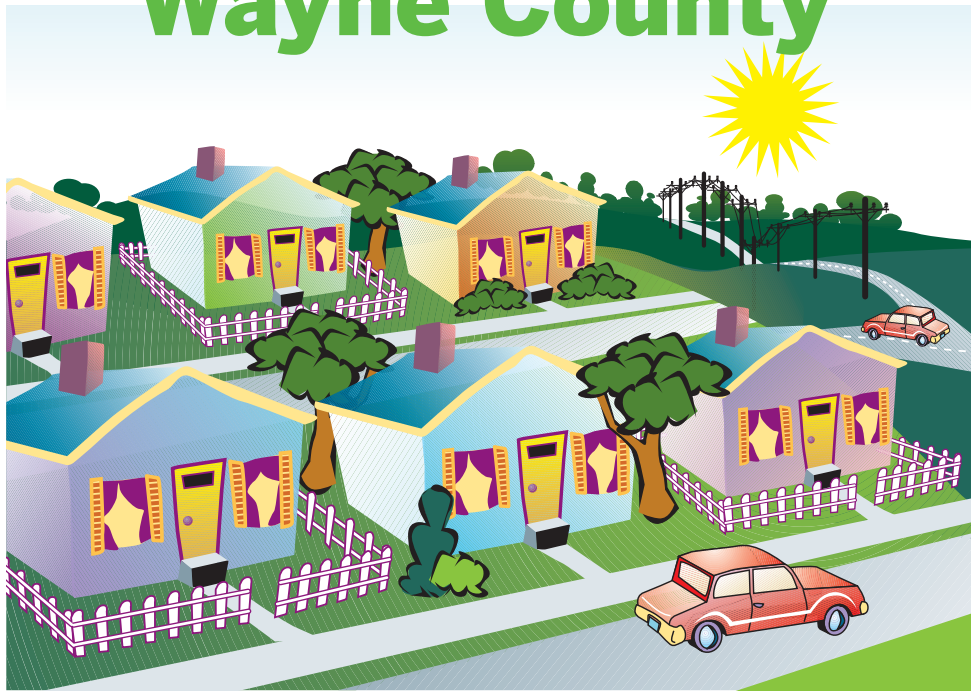




Emergency Planning for the R.E. Ginna Nuclear Power Plant

Wayne County



Important Safety Information For Your Community and Annual Special Needs Survey

2017/2018

Revision 1 - June 2017

Please read the entire brochure or have someone translate it for you. Discuss this information with members of your family, and then keep the brochure in a convenient place for future use.

ESTA INFORMACIÓN ES IMPORTANTE

Por favor lea este panfleto o busque a alguien que se lo lea. Comparta esta información con su familia y mantenga este panfleto en un lugar conveniente para un uso futuro.

What to Do in an Emergency

Monitor and Prepare

Tune your radio or TV to one of the stations listed in this brochure. Monitor the radio and TV for emergency information and follow emergency instructions. People should prepare for possible evacuation (e.g.; reunite with family members, assemble emergency kits, provide for pet needs, keep off of the road as much as possible).

Keep Phone Lines Open

Please do not make unnecessary phone calls. Leaving phone lines open for emergency workers will help everyone involved. If you require assistance, call the emergency phone numbers broadcast on the radio.

Shelter-in-Place

Go indoors and stay there. Close all doors and windows and shut off any systems that draw in outside air, such as furnaces, fireplaces and air conditioners. Keep listening to the radio for updates. Keep pets inside and shelter farm animals. If traveling in a vehicle, close windows and vents.

If Instructed to Evacuate

In an evacuation, people in the affected area will be asked to go to local reception centers listed within this brochure. After this, they can stay at specified mass care centers or with friends or relatives outside the evacuation zone.

Please do not try to pick up children or others at schools, hospitals, nursing homes or overnight campgrounds. These facilities will be following their own special emergency plans, and you would most likely miss connections. If evacuated, students, hospital patients and nursing home residents will be accompanied to relocation centers where their needs will be addressed. To find out where people are being moved, stay tuned to the radio.

Plan for three days away from home, locking up and turning appliances off as you would for a weekend vacation. Pack all necessary items (See "Emergency Supplies"). Evacuate everyone in your home, following directions given on the radio. These routes will have been selected as the safest ways out of the affected area.

Shadow Evacuation

Persons should only evacuate when instructed to do so. Evacuation of individuals not within the declared evacuation area could impede evacuation traffic flow. Monitor the radio and prepare to follow instructions.

Staged Evacuation

You may be instructed to shelter-in-place until people in a higher risk area are evacuated. Monitor the radio and prepare to follow instructions.

Information for Farmers

When advised to do so, remove all livestock from pasture, shelter if possible, and provide them with stored feed and protected water. The county U.S. Department of Agriculture representative will provide further instructions regarding the protection of livestock and foodstuffs.

School Information

Wayne-Finger Lakes BOCES

Receiving Location: Newark High School

Wayne Technical & Career Center, Wayne Education Center.

Refer to the emergency information provided by the school district for instructions on what to do to pick up your child or children.

Wayne Central School District

Receiving Location: Palmyra-Macedon High School

Ontario Elementary School, Ontario Primary School, Freewill Elementary School, Thomas C. Armstrong Middle School, James A. Beneway High School.

Williamson Central School District

Receiving Location: Newark High School

Williamson Elementary School, Williamson Middle School, Williamson Senior High School

Marion Central School District

Receiving Location: Newark High School

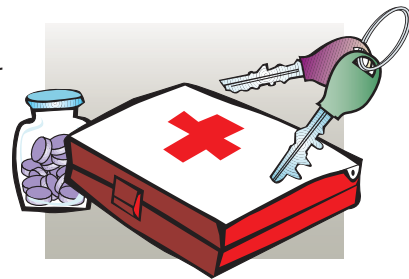
Marion Jr.-Sr. High School, Marion Elementary School.

Non-Public School and Day Care Information

Parents and guardians with children attending non-public schools or at day care facilities within the emergency planning zone should become familiar with the facilities' emergency plans. Contact the facility operator for more information.

How to Prepare for an Emergency

You never know when you might have to leave your home on short notice. A nuclear incident is only one possibility. Floods, fires, chemical spills or severe illness could occur at any time. Preparing now will help you respond more quickly in any emergency.



Emergency Kit

Keep an emergency kit – portable radio, flashlight, extra batteries, extra car keys, first aid kit and other items – in a special place that the whole family can easily locate. Include this booklet in your emergency kit with your location marked on the map. Write a list of the items you would want to take if you had to leave home quickly and post the list in a convenient spot. Be sure to keep a supply of all the items on your list. Gather any important documents that you might need in an emergency and keep them together in a safe place that you can access quickly and easily.

Transportation

Maintain your vehicle in good running order and keep the gas tank at least half full at all times. If you will need transportation in an emergency, use the attached reply card to notify local authorities now.

Pets

Only service animals will be permitted inside reception centers or shelters. Pets will not be allowed inside reception centers and shelters. Pet sheltering information will be available at the reception centers and shelters for your area.

Contact your respective County Emergency Management Agency for additional information.

People With Special Needs

Emergency Assistance Questionnaire

In the event of an emergency or disaster, some residents may need special attention during evacuation and sheltering because of a handicap. The Office of Emergency Management maintains a voluntary registration list of individuals in need of assistance. The purpose of this information is to make response agencies aware of those with special needs. THIS INFORMATION WILL BE KEPT CONFIDENTIAL AND USED ONLY IN THE CASE OF AN EMERGENCY OR DISASTER. It does not guarantee the agencies will be able to provide assistance in every type of emergency. Wayne/ Monroe Counties shall not be made liable for any claim based upon the good faith failure to exercise or perform a function or duty on the part of any officer or employee in carrying out a local disaster preparedness plan. If you no longer live at the address to which this form was sent, please indicate your correct address.

Name	Birthdate
Home Phone	Cell Phone
Street Address	Apt. No.
Town	Zip
Alternate Contact Person	
Relationship	
Home Phone	Work Phone
Cell Phone	

Fold Here

- I have a hearing problem and need to be notified of emergencies by phone.
- I have a TTY or TTD.
- My alternate contact can notify me of emergencies.
- Transportation needs: I have my own vehicle or someone I can ride with.
 - I require assistance to ride in a car or bus.
 - I require a bus equipped for wheelchairs. I require an ambulance.
- I have a medical problem that requires assistance in the case of an emergency:
 - Wheelchair Oxygen Dialysis
 - Vision Other: _____
 - I leave the state for a portion of each year. From: _____ To: _____

I hereby consent and pre-authorize that emergency response personnel shall be able to enter my home during search and rescue operations if necessary to ensure my safety and welfare during an emergency. I also consent to have my name placed in the county voluntary registry of individuals with special needs.

Signature: _____ Date: _____

FOR OFFICE USE ONLY

ERPA: _____ FD: _____ TOWN: _____ HI: _____ M: _____

Records Update: _____

2017/2018

PLACE
STAMP
HERE

**Wayne County Emergency Management Office
7376 Route 31, Suite 2000
Lyons, NY 14489-9174**

Please TAPE closed here. DO NOT STAPLE.

Nuclear Power and Public Safety

Benefits and Potential Risks of Nuclear Power

Used properly, nuclear fission (the “splitting” of uranium atoms) is a safe, dependable source of electricity. It is reasonable, though, to be concerned about what might happen in the event of a serious incident at a power plant.

A power plant reactor cannot produce a nuclear explosion. The uranium fuel contains very little fissionable material. As for radiation, the complex structure of a nuclear power plant is designed to prevent the release of radiation. A serious incident, however, could allow some radiation to escape, most likely as a cloud, or “plume,” of radioactive steam that would be carried away from the plant by the wind. The degree of risk to the public would depend on the size of the plume, the direction and speed of the wind, and other factors.

Emergency Planning for the Ginna Area

Special plans have already been developed to protect the public in the event of a nuclear incident in your area. These plans give specific attention to people who – like you – live, work or visit within 10 miles of a nuclear power plant. Procedures are in place to help protect you and other members of the public in the unlikely event of a nuclear emergency. If necessary, area officials would declare an emergency and take measures to ensure public safety.

This pamphlet addresses procedures for the Ginna area. Please read and keep this material for future reference. Although it specifically addresses a potential nuclear accident, much of the information is useful in any major emergency.

Siren Testing

Warning sirens surrounding the R.E. Ginna Nuclear Power Plant are routinely tested weekly on Tuesdays at 9:30 am. Annual full sound testing is conducted on the first Tuesday of May.

Warning Sirens

Communities across the United States may use outdoor warning sirens for many purposes. Sirens are not exclusive to nuclear power facilities. Sirens are designed to warn the public of many hazards, including fires, flooding, and other events that warrant public notifications. The warning sirens for the R.E. Ginna Nuclear Power Plant EPZ, when activated, emit a three-minute steady sound. If you hear a siren, you should tune to one of the Emergency Alert System (EAS) stations listed in this brochure for official information.

The siren network is tested periodically, including simultaneous activation of all sirens, which takes place once a year. You may hear this test, but it is of much shorter duration than a full sounding.

Siren Malfunction

A siren may malfunction and inadvertently sound. Some indications of a siren malfunction are a siren sounding for more than five minutes, or a siren sounding with no accompanying message on the Emergency Alert System.

Siren Malfunction Contact Numbers

Report siren malfunctions to Wayne County 911 Center.

Public Inquiry Telephone Numbers

315.332.2880

Shelter-in-Place or Evacuation

Officials might recommend that people either take shelter indoors or evacuate an area. It is critically important that you follow the recommended course of action. Staying home when instructed to evacuate or driving around when urged to stay indoors could expose you to danger unnecessarily.

NOTE: If you or someone you know might not respond to warning sirens or radio broadcasts due to impaired hearing or other factors, please use the attached reply card to notify local authorities now.

Potassium Iodide (KI)

Potassium Iodide (KI) is a nonprescription drug that may prevent the thyroid from absorbing radioactive iodine. KI is one type of protective action that may be recommended during a nuclear incident. KI should only be taken at the direction of the appropriate state and local authorities. Consult your physician if you have concerns about the safety of KI for your child or yourself. KI is effective in blocking the absorption of radioactive iodine only. Since it does not block the absorption of any other radioactive material, evacuation or sheltering in place may be the most effective and preferred protective actions. Residents living within the 10-mile radius, who have not already done so, may obtain more information about KI or obtain KI by contacting:

Wayne County Emergency Management Office
7376 Route 31, Suite 2000
Lyons, NY 14489-9174
315.946.5663

Classification of Accidents

There are four accident classifications used to describe nuclear emergencies. We contact federal, state and local authorities in each of the following situations:

UNUSUAL EVENTS — Events are in progress or have occurred which indicate a potential degradation of the level of safety of the plant or indicate a security threat to facility protection. No releases of radioactive material requiring off-site response or monitoring are expected unless further degradation of safety system occurs.

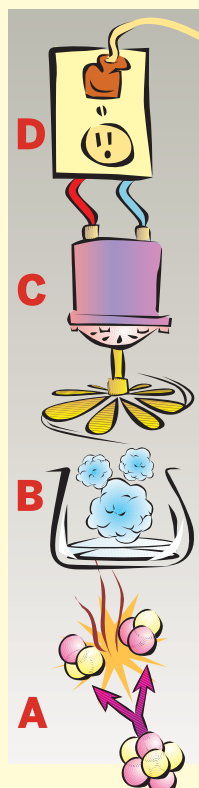
ALERT — Events are in progress or have occurred which involve an actual or potential substantial degradation of the level of safety of the plant or a security event that involves probable life threatening risk to site personnel or damage to site equipment because of intentional malicious dedicated efforts of a hostile act. Any releases are expected to be limited to small fractions of the Environmental Protection Agency (EPA) Protective Action Guideline exposure levels.

SITE AREA EMERGENCY — Events are in progress or have occurred which involve actual or likely major failures of plant functions needed for protection of the public or security events that result in intentional damage or malicious acts: (1) toward site personnel or equipment that could lead to the likely failure of or; (2) prevents effective access to equipment needed for the protection of the public. Any releases are not expected to result in exposure levels which exceed EPA Protective Action Guideline exposure levels beyond the site boundary.

GENERAL EMERGENCY — Events are in progress or have occurred which involve actual or imminent substantial core degradation or melting with potential for loss of containment integrity or security events that result in an actual loss of physical control of the facility. Releases can be reasonably expected to exceed EPA Protective Action Guideline exposure levels off-site for more than the immediate site area.

What You Need to Know About Nuclear Power Plants and Radiation

How Do Nuclear Plants Work?



Power plants create electricity by running steam turbines, which are powered either by fossil fuels – coal, oil, natural gas – or by nuclear power. Nuclear technology produces energy by splitting uranium atoms in a process called fission. (A) Fission generates heat that (B) boils water for the steam that runs the (C) turbines, which produce the (D) electricity that we all use – making, for instance, (E) toast for breakfast.

In a nuclear power plant, pea-sized uranium pellets are stacked inside long, thin fuel rods, which are grouped in “assemblies” inside a reactor “core.” The core is encased in a very thick steel capsule, and the entire reactor is further protected by an airtight steel and concrete building called a “containment.” This complex structure is designed to help ensure the safe utilization of nuclear power.

How Do We All Benefit From Nuclear Power?

Any fuel used to produce energy also produces waste. By-products of coal-burning include smoke, ashes and slag. Even with the latest technologies, it is impossible to prevent some of this waste from reaching the environment outside the power plant. Nuclear power generation, on the other hand, produces waste primarily in the form of spent fuel, which is not released into the environment. Besides helping to protect the environment, nuclear energy is also highly efficient, producing vastly more energy for its weight than coal or oil. We would have to burn more than 120 gallons of oil or up to a ton of coal to produce the same amount of energy as that found in a single pellet of uranium.

What Is Radiation?

Radiation is energy in the form of rays or particles. Some atoms – the ones we call radioactive – are unstable. As they go through a natural process called “decay” in which they change into a stable atom, they throw off rays or particles called radiation. Radiation is exactly the same, whether from nature, or medical or industrial activities.

Radiation is measured in millirems. On average, a person receives about 300 millirem of radiation annually from natural sources and another 300 millirem or so from X-rays and other medical procedures. It takes more than 35 times this much – over 20,000 millirem in a single day – to produce identifiable effects in the body. Federal regulations allow workers to receive up to 5,000 millirem of radiation in the course of a year’s work.

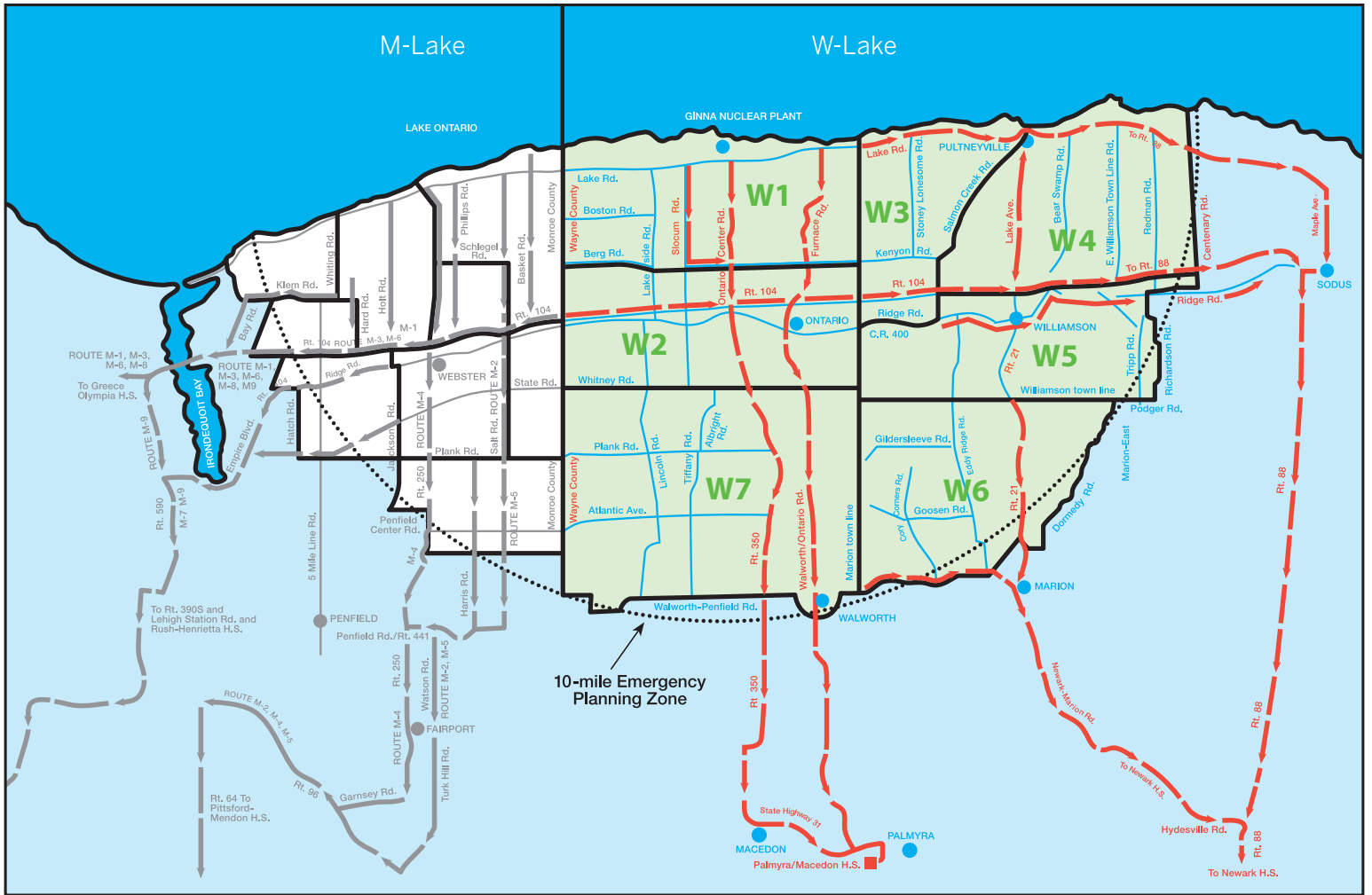
For More Information, Please Visit:

www.nrc.gov

www.nei.org

www.hps.org/publicinformation/Radterms

www.emergency.cdc.gov/radiation



10-mile Emergency Planning Zone

Wayne County Emergency Response Planning Areas (ERPAs)

In the Wayne County Radiological Emergency Response Plan, Wayne County is divided into eight Emergency Response Planning Areas (ERPAs). The following describes the ERPAs and the evacuation routes to Evacuation Reception Centers in Wayne County.

ERPA W-1

The Town of Ontario north of Berg Road and Kenyon Road.

Evacuation Route for ERPA W-1

Reception Center: Palmyra-Macedon High School

Route 1

Area west of North Slocum Road. Take the most convenient route south to NYS Route 104, turn east and proceed to the intersection with Ontario Center Road. Turn south onto Ontario Center Road (Route 350) into Macedon. Turn east (left) onto Route 31; proceed to Palmyra on Route 31 (east). Turn right onto Hyde Parkway. Follow to Palmyra-Macedon High School (151 Hyde Parkway).

Route 2

Vicinity of Ontario Center Road. Take the most convenient route to Ontario Center Road. Turn south onto Ontario Center Road (Route 350). Proceed south on Route 350 to Macedon; turn east (left) onto Route 31; proceed to Palmyra on Route 31 (east). Turn right onto Hyde Parkway. Follow to Palmyra-Macedon High School (151 Hyde Parkway).

Route 3

Vicinity of Furnace Road. Take the most convenient route to Furnace Road. Proceed south on Furnace Road through Ontario. Continue south on Walworth-Ontario Road to the intersection with Route 31. Turn east (left) on Route 31; proceed to Palmyra on Route 31 (east). Turn right onto Hyde Parkway. Follow to Palmyra-Macedon High School (151 Hyde Parkway).

ERPA W-2

The Town of Ontario south of Berg Road and Kenyon Road.

Evacuation Route for ERPA W-2

Reception Center: Palmyra-Macedon High School

Route 1

West of Route 350. Take the most convenient route to Route 350. Turn south (right) onto Route 350 (Ontario Center Road). Proceed south on Route 350 into Macedon. Turn east (left) onto Route 31; proceed to Palmyra on Route 31 (east). Turn right onto Hyde Parkway. Follow to Palmyra-Macedon High School (151 Hyde Parkway).

Route 2

Vicinity of Walworth-Ontario Road. Take the most convenient route to Walworth-Ontario Road. Proceed south on Walworth-Ontario Road until the intersection with Route 31. Turn east (left) on Route 31; proceed to Palmyra on Route 31 (east). Turn right onto Hyde Parkway. Follow to Palmyra-Macedon High School (151 Hyde Parkway).

ERPA W-3

The northwest section of the Town of Williamson west of Salmon Creek Road and north of Old Ridge Road.

Evacuation Route for ERPA W-3

Reception Center: Newark High School

Route 1

North of Seeley Road. Take the most convenient route to Lake Road. Turn east (right) on Lake Road and proceed to Maple Avenue in the Town of Sodus. Turn south (right) on Maple Avenue, cross Route 104 and proceed to Main Street in

the Village of Sodus. Turn west (right) on Main Street and proceed to Route 88. Turn south (left) on Route 88 and proceed to the Village of Newark. Continue on Route 88 South (Main Street in the Village) to West Maple Avenue. Turn west (right) on West Maple Avenue and proceed to Peirson Avenue. Turn south (left) on Peirson Avenue and proceed to Newark High School.

Route 2

South of Seeley Road. Take the most convenient route to Route 104. Turn east (left) on Route 104 and proceed to Route 88 (Main Street in the Village of Sodus). Turn south (right) on Route 88 and proceed to the Village of Newark. Continue driving south on Route 88 (Main Street in the Village) to West Maple Avenue. Turn west (right) on West Maple Avenue and proceed to Peirson Avenue. Turn south (left) on Peirson Avenue and proceed to Newark High School.

ERPA W-4

The northeast section of the Town of Williamson east of Salmon Creek Road and north of the Ontario Midland Railroad (along Route 104), and the Town of Sodus west of North Centenary Road and north of the Ontario Midland Railroad (along Route 104).

Evacuation Route for ERPA W-4

Reception Center: Newark High School

Route 1

North of Church, Jersey and Brasser Roads. Take the most convenient route north to Lake Road. Turn east (right) on Lake Road and proceed to Maple Avenue in the Town of Sodus. Turn south (right) on Maple Avenue and proceed to Main Street in the Village of Sodus. Turn west (right) on Main Street and proceed to Route 88 South. Turn south (left) on Route 88 and proceed to the Village of Newark. Continue on Route 88 (Main Street in the Village) to West Maple Avenue. Turn west (right) on West Maple Avenue and proceed to Peirson Avenue. Turn south (left) on Peirson Avenue and proceed to Newark High School.

Route 2

South of Church, Jersey and Brasser Roads. Take the most convenient route (south) to Route 104. Turn east (left) on Route 104 and proceed to Main Street in the Village of Sodus. Turn south (right) on Route 88 and proceed to the Village of Newark. Continue on Route 88 (Main Street in the Village) to West Maple Avenue. Turn west (right) on West Maple Avenue and proceed to Peirson Avenue. Turn left (south) on Peirson Avenue and proceed to Newark High School.

ERPA W-5

The Town of Williamson south of the Ontario Midland Railroad (along Route 104), and a small part of the Town of Sodus south of the Ontario Midland Railroad and west of Richardson Road.

Evacuation Route for ERPA W-5

Reception Center: Newark High School

Route 1

East of Route 21. Take the most convenient route to Ridge Road. Turn east on Ridge Road and proceed to Route 88 (Main Street in the Village of Sodus). Turn south (right) on Route 88 and proceed to the Village of Newark. Continue on Route 88 (Main Street in the Village) to West Maple Avenue. Turn west (right) on West Maple Avenue and proceed to Peirson Avenue. Turn south (left) on Peirson Avenue and proceed to Newark High School.

Route 2

West of Route 21. Take the most convenient route to Route 21. Proceed south on Route 21 to North Main Street in Marion. Turn east (left) on North Main Street and proceed to Mill St. Turn east (left) on Mill Street (the name changes to Newark-Marion Rd. and then Hydesville Rd.); continue to Route 88. Turn south (right) on Route 88 and proceed to the Village of Newark. Continue south on Route 88 (Main Street in the Village) to West Maple Avenue. Turn west (right) on West Maple Avenue and proceed to Peirson Avenue. Turn south (left) on Peirson Avenue and proceed to Newark High School.

ERPA W-6

The northwest portion of the Town of Marion north of Walworth-Marion Road and west of Marion-East Williamson Road.

Evacuation Route for ERPA W-6

Reception Center: Newark High School

Route 1

East of Eddy Ridge Road. Take the most convenient route to Mill St. Proceed on Mill St. (the name changes to Newark-Marion Rd. and then Hydesville Rd.) to Route 88. Turn south (right) on Route 88 and proceed to the Village of Newark. Continue south on Route 88 (Main Street in the Village) to West Maple Avenue. Turn west (right) on West Maple Avenue and proceed to Peirson Avenue. Turn south (left) on Peirson Avenue and proceed to Newark High School.

Route 2

West of Eddy Ridge Road. Take the most convenient route to the Walworth-Marion Road. Cross Route 21 and proceed to Main Street in Marion. Turn south (right) on Main Street and proceed to Mill St. Turn left on Mill St. (the name changes to Newark-Marion Rd. and then Hydesville Rd.) and proceed to Route 88. Turn south (right) on Route 88 and proceed to the Village of Newark. Continue south on Route 88 (Main Street in the Village) to West Maple Avenue. Turn west (right) on West Maple Avenue and proceed to Peirson Avenue. Turn south (left) on Peirson Avenue and proceed to Newark High School.

ERPA W-7

All the Town of Walworth north of Route 441 and Penfield-Walworth Road including the Hamlet of Walworth.

Evacuation Route for ERPA W-7

Reception Center: Palmyra-Macedon High School

Route 1

West of Route 350. Take the most convenient route to Route 350; turn south (right) on Route 350 (Ontario Center Road); continue south into Macedon to the intersection with Route 31. Turn east (left) on Route 31 and proceed to Palmyra on Route 31 (east). Turn right onto Hyde Parkway. Follow to Palmyra-Macedon High School (151 Hyde Parkway).

Route 2

Vicinity of Walworth-Ontario Road. Take the most convenient route to the Walworth-Ontario Road, turn south (right) on Walworth-Ontario Road; proceed south to the intersection with Route 31. Turn east (left) on Route 31 and proceed to Palmyra along Route 31 (east). Turn right onto Hyde Parkway. Follow to Palmyra-Macedon High School (151 Hyde Parkway).

ERPA W-Lake

Wayne County, Lake Ontario portion of 10-mile EPZ.

Emergency Bus Pickup Plan

If you are advised to evacuate (this could be just one ERPA of the EPZ) and you do not have transportation, check your closest bus pickup point below. Carry as little baggage as possible (preferably one piece), place a tag on it which includes your name, address and phone number, and then walk to the bus pickup point to wait for transportation to the Reception Center designated for your ERPA. Animals, except guide or service dogs, will not be permitted on the bus unless confined in a carrier. In the Wayne County Radiological Emergency Response Plan, the Evacuation Bus Routes to the Reception Centers and their pickup points are as follows.

ERPA W-1

Your Reception/Congregate Care Center is Palmyra-Macedon High School.

Bus pickup points in ERPA W-1:

Bus Route 1

- Berg Road and County Line Road
- Boston Road and Lakeside Road
- County Line Road and Boston Road
- Lake Road and County Line Road
- Lakeside Road and Berg Road
- Roder Parkway and Lake Road
- Verdine/Lakeside Road and Lake Road
- Willits Road and Lakeside Road

Bus Route 2

- Brick Church Road and North Slocum Road
- Knickerbocker Road and Brick Church Road
- Knickerbocker Road and Kenyon Road
- Lake Road and Knickerbocker Road
- North Slocum Road and Kenyon Road
- North Slocum Road and Lake Road
- Ontario Center Road and Brick Church Road
- Ontario Center Road and Kenyon Road
- Ontario Center Road and Lake Road
- Willits Road and North Slocum Road

Bus Route 3

- Bailey Road and Furnace Road
- Bear Creek Drive and Cherry Tree Drive
- Fisher Road and Kenyon Road
- Furnace Road and Bear Creek Drive
- Furnace Road and Lake Road
- Kenyon Road and Furnace Road
- Knickerbocker Road and Bailey Road
- Lake Road and Fisher Road
- Putnam Road and Fisher Road
- Putnam Road and Furnace Road
- Trimble Road and Fisher Road

ERPA W-2

Your Reception/Congregate Care Center is Palmyra-Macedon High School.

Bus pickup points in ERPA W-2:

Bus Route 1

- Clevenger Road and South Slocum Road
- Lincoln Road and Clevenger Road
- NYS Route 350 and Paddy Lane
- Paddy Lane and Walworth-Ontario Road
- South Slocum Road and Paddy Lane
- South Slocum Road and Whitney Road
- Swadling Road and Whitney Road
- Whitney Road and Lincoln Road

Bus Route 2

- County Line Road and NYS Route 104
- Dean Parkway and NYS Route 104
- Fisher Road and NYS Route 104
- Furnace Road and NYS Route 104
- Knickerbocker Road and NYS Route 104
- Lakeside Road and NYS Route 104
- NYS Route 350 and NYS Route 104
- South Slocum Road and NYS Route 104

Bus Route 3

- County Line Road and Ridge Road
- Furnace Road and Ridge Road
- Holly Bush Lane and Ridge Road
- Knickerbocker Road and Ridge Road
- Lanson Road and Ridge Road
- Lincoln Road and Ridge Road
- NYS Route 350 and Ridge Road
- Ridge Road and Arbor Road
- South Slocum Road and Ridge Road
- Walter Cone Drive and Ridge Road
- Whitney Road and County Line Road

ERPA W-3

Your Reception/Congregate Care Center is Newark High School.

Bus pickup points in ERPA W-3:

Bus Route 1

- Fisher Road and Lake Road
- Fisher Road and Shepherd Road
- Kenyon Road and Fisher Road
- Kenyon Road and Stoney Lonesome Road
- Lake Road and Stoney Lonesome Road
- NYS Route 104 and Fisher Road
- NYS Route 104 and Salmon Creek Road
- Ridge Road and Fisher Road
- Ridge Road and Salmon Creek Road
- Seeley Road and Fisher Road
- Seeley Road and Stoney Lonesome Road
- Shepherd Road and Stoney Lonesome Road

Bus Route 2

- Eaton Road and Salmon Creek Road
- Lake Road and Lake Avenue
- NYS Route 104 and Salmon Creek Road
- Salmon Creek Road and Lake Avenue
- Salmon Creek Road and Shepherd Road
- Tuckahoe Road and Salmon Creek Road
- Woods Road and Salmon Creek Road

ERPA W-4

Your Reception/Congregate Care Center is Newark High School.

Bus pickup points in ERPA W-4:

Bus Route 1

- Church Road and Tuckahoe Road
- Jay Street and Lake Avenue
- Jersey/Church Road and Lake Avenue
- Lake Road and Jay Street
- Lake Avenue and Pound Road
- Maken Road and Lake Road
- New Road and Lake Avenue
- Pound Road and Bear Swamp Road
- Railroad Avenue and Lake Avenue
- Selby Way and Lake Avenue
- Tuckahoe Road and Railroad Avenue
- Woods Road and Tuckahoe Road

Bus Route 2

- Bear Swamp Road and Lake Road
- Brasser Road and Bear Swamp Road
- Brasser Road and Town Line Road
- Gates Drive and Lake Road
- Lake Road and North Centenary Road
- New Road and Bear Swamp Road
- North Centenary Road and Middle Road
- North Centenary Road and Van Lare Road
- Redman Road and Lake Road
- Town Line Road and Lake Road
- Town Line Road and Middle Road
- Van Lare Road and Town Line Road

ERPA W-5

Your Reception/Congregate Care Center is Newark High School.

Bus pickup points in ERPA W-5:

Bus Route 1

- Arbor Road Extension and Arbor Road
- Arbor Road and Ridge Road
- Lake Avenue and NYS Route 104
- Marion-East Williamson Road and NYS Route 104
- Pease Road and Ridge Road
- Pound Road and NYS Route 104
- Redman Road and NYS Route 104
- Redman Road and Ridge Road
- Ridge Chapel Road and Ridge Road
- Ridge Road and Salmon Creek Road
- Ridge Road and South Centenary Road
- Salmon Creek Road and NYS Route 104
- South Centenary Road and NYS Route 104
- Tuckahoe Road and NYS Route 104

Bus Route 2

- Beach Road and Ridge Chapel Road
- Eddy Ridge Road and Eddy Road
- Eddy Road and NYS Route 21
- Everdyke Road and Marion-East Williamson Road
- Franklin Road and Pearsall Road
- NYS Route 21 and Pearsall Road
- Pearsall Road and Russell Road
- Pease Road and Beach Road
- Podger Road and Tripp Road
- Ridge Chapel Road and Eddy Road
- Russell Road and Everdyke Road

Bus Route 3

- Congdon Road and Marion-East Williamson Road
- Eddy Ridge Road and Ridge Road
- Marion-East Williamson Road and Ridge Road
- NYS Route 21 and Ridge Road
- Richardson Road and Morse Hill Road
- Ridge Road and Tripp Road
- Ridge Road and Willow Drive
- Russell Road and Congdon Road
- Tripp Road and Richardson Road
- Tuckahoe Road and Ridge Road

ERPA W-6

Your Reception/Congregate Care Center is Newark High School.

Bus pickup points in ERPA W-6:

Bus Route 1

- Dormedy Hill Road and Marion-East Williamson Road
- Electronics Road and NYS Route 21
- Franklin Road and NYS Route 21
- Marion-East Williamson Road and Podger Road
- Marion-East Williamson Road and Russell Road
- NYS Route 21 and Farnsworth Road
- NYS Route 21 at the Marion/Williamson Town Line
- Witherden Road and Dormedy Hill Road
- Witherden Road and Farnsworth Road

Bus Route 2

- Ball Road and NYS Route 21
- Daniel Drive and NYS Route 21
- North Main Street and Marion-East Williamson Road
- North Main Street and NYS Route 21
- Van Cruyningham Road and Ball Road
- Van Cruyningham Road at the Marion Town Line
- Warner Road and NYS Route 21
- Witherden Road and Marion-East Williamson Road

Bus Route 3

- Ball Road and Eddy Ridge Road
- Boss Road and Eddy Ridge Road
- Boss Road and Ridge Chapel Road
- Cory Corners Road and Ridge Chapel Road
- Eddy Ridge Road and Dean Road
- Eddy Ridge Road at the Marion Town Line
- Gildersleeve Road and Eddy Ridge Road
- Goosen Road and Cory Corners Road
- Ridge Chapel Road and Dean Road
- Warner Road and Eddy Ridge Road

Bus Route 4

- Cory Corners Road and Walworth- Marion Road
- Engleson Road and Ridge Chapel Road
- Goosen Road and Hall Center Road
- Hall Center Road and Walworth-Marion Road
- Mason Road and Engleson Road
- Mason Road and Gildersleeve Road
- NYS Route 21 and Walworth-Marion Road
- Pease Road and Engleson Road
- Pigeon Hill Road and Hall Center Road
- Ridge Chapel Road and Gildersleeve Road
- Ridge Chapel Road and Walworth-Marion Road
- Van Hall Street and Walworth-Marion Road

ERPA W-7

Your Reception/Congregate Care Center is Palmyra-Macedon High School.

Bus pickup points in ERPA W-7:

Bus Route 1

- Atlantic Avenue and County Line Road
- Atlantic Avenue and Lincoln Road
- Bills Road and County Line Road
- Bills Road and Stalker Road
- Burrows Road and Lincoln Road
- County Line Road and Haley Road
- Haley Road and Lincoln Road
- Jacobs Road and County Line Road
- Jacobs Road and Lincoln Road
- Lincoln Road and Kuttruff Road
- NYS Route 441 (Penfield-Walworth Rd.) and Stalker Rd.
- Plank Road and County Line Road
- Plank Road and Lincoln Road
- Plank Road and Swadling/Schoolhouse Road

Bus Route 2

- Albright Road and Hennessey Road
- Albright Road and Plank Road
- Atlantic Avenue and Lewis Road
- Burrows Road and Tiffany Road
- Canandaigua Road and Kuttruff Road
- Downs Road and Atlantic Avenue
- Finley Road and NYS Route 350
- Fosdick Road and Hennessey Road
- NYS Route 350 and Atlantic Avenue
- NYS Route 350 and Hennessey Road
- NYS Route 441 and Canandaigua Road
- Plank Road and Lewis Road
- Plank Road and NYS Route 350
- Tiffany Road and Atlantic Avenue

Bus Route 3

- Arbor Road and Smith Hill Road
- Downs Road and NYS Route 441
- Finley Road and Walworth-Ontario Road
- NYS Route 350 and NYS Route 441
- Smith Hill Road and Boynton Road

- Smith Hill Road and Walworth-Ontario Road
- Tummonds Road and Arbor Road
- Walworth-Marion Road and Boynton Road
- Walworth-Ontario Road and Tummonds Road
- Walworth-Marion Road and Walworth-Ontario Road

Emergency Alert System

The **Emergency Alert System** will provide you with official information in cases of tornadoes, floods, nuclear plant accidents or other emergencies. Turn on your radio or TV for official information and instructions.

Emergency Alert Stations

AM
WHAM 1180

FM
WDVI 100.5

TV
WHEC Channel 10

Keep listening to your radio for the latest information and instructions. Remain calm. Do not rush.

Emergency Supplies

- General first aid kit and any special medication
- Cash, credit, or ATM cards
- Important documents
- Change of clothing
- Personal health products (toothbrush, eye care, sanitary products, etc.)
- Baby formula, diapers, car seat, toys
- Special dietary foods
- Pet related supplies



Additional Information

During normal business hours:

Wayne County Emergency Management Office

7376 Route 31, Suite 2000
Lyons, NY 14489-9174
315.946.5663

New York State Disaster Preparedness Commission

Public Information Officer
State Office of Emergency Management
State Campus
Building #22, Suite 101
1220 Washington Avenue
Albany, NY 12226-2251
518.292.2311 or 2312

R.E. Ginna Nuclear Power Plant Community Relations

1503 Lake Road
Ontario, NY 14519-9364
315.791.5402

Exelon Corporation

www.exeloncorp.com



@exelonuclear

www.exeloncorp.com/reginna



Reception Center Locations

Palmyra-Macedon High School

151 Hyde Pkwy
Palmyra, NY 14522
(315) 597-3420

Newark High School

625 Peirson Ave
Newark, NY 14513
(315) 332-3240